

Hi, Ima B. Student

School Name: John F. Kennedy High School, School Code: 123456

Fall 2015, Grade 9

Student I.D. #24068907

Optional Code: #00

Access Code: A02670146P



PSAT™ 8/9

Your Score Report

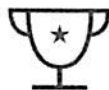
Get your full report online
studentscores.collegeboard.org

access code **A02670146P**



Free Practice

Practice the skills you'll need for high school and beyond – free online on khanacademy.org/sat



Core Course Work

Use your results to create a core course work plan in high school



Explore

Begin to explore careers that might interest you – link directly from your online score report

Your Evidence-Based
Reading and Writing Score

360 | 120 to 720

Your Nationally Representative **20th** Sample Percentile



✓ You are on track for college readiness.

Stay on track and continue your progress. Start now with your free, personalized recommendations waiting for you on khanacademy.org/sat.

Your Total Score

780 | 240 to 1440

Your Nationally Representative **23rd** Sample Percentile

Keep in mind, the PSAT™ 8/9, PSAT/NMSQT™, and SAT™ are on the same scale.

Your score shows you how you would have scored that day on the PSAT/NMSQT™ and SAT™. How well you do depends on what you do next!

Your Math Score

420 | 120 to 720

Your Nationally Representative **40th** Sample Percentile



⚠ You are not on track for college readiness. You have free, personalized recommendations waiting for you on khanacademy.org/sat.

Let's get you back on track, so you won't have to take noncredit courses in college. You have free, personalized recommendations waiting for you on khanacademy.org/sat.

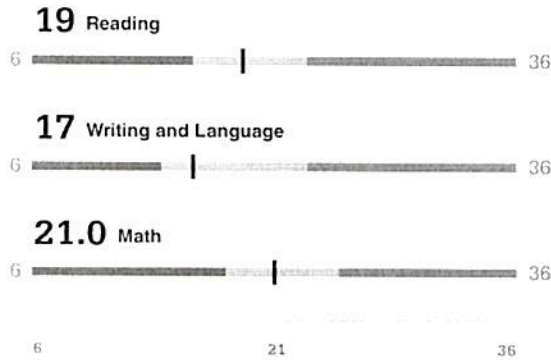
The College and Career Readiness Benchmark

Reaching your grade-level Benchmark means that you are likely on track to be ready to succeed in select first-year, credit-bearing college courses.

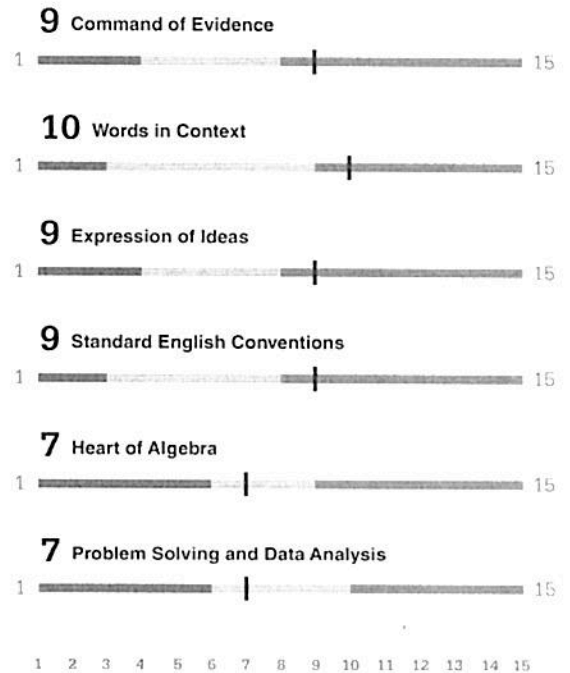


*The red, yellow, and green ranges in the test scores and subscores reflect your areas of strengths and weaknesses compared to the typical performance of students in your grade.

Test Scores 6 to 36 range*



Subscores 1 to 15 range*



Cross-Test Scores 6 to 36 range

21 Analysis in History/Social Studies
22 Analysis in Science

When you take tests more than once, your scores may differ slightly upon each testing occasion. This expected variation is considered your score range and reflects the range your scores will likely fall in upon retesting. For the PSAT™ 3/9 these ranges are approximately:

Total: Your score + 40 points.
Section: Your score + 30 points.
Test Scores and Cross-Test Scores: Your score + 3 points.
Subscores: Your score + 2 points.

Remember that you will receive scores in the same areas when you take the PSAT/NMSQT and SAT.

Your Scores: Next Steps

Your score indicates that you are already likely able to:

Reading Test

Improve your skills by focusing on your ability to:

Revise text as needed to improve the exactness or content appropriateness of word choices within somewhat challenging texts

Retain or add information or ideas to a piece of a text to support claims or points in somewhat challenging text

Revise somewhat challenging text to ensure that information is presented in the most logical order

Revise text as needed to improve the exactness or content appropriateness of word choices within somewhat challenging texts

19

6 to 36

Retain or add information or ideas to a piece of text to support claims or points in challenging text

Use a variety of sentence structures to accomplish a rhetorical purpose such as persuading an audience

Revise text as needed to improve the exactness or content appropriateness of word choices within challenging texts

Retain or add information or ideas to a piece of text to support claims or points in challenging text

Use a variety of sentence structures to accomplish a rhetorical purpose such as persuading an audience

Writing and Language Test

Draw reasonable conclusions from somewhat challenging texts

Describe the overall structure of a somewhat challenging text

Identify claims and counterclaims explicitly stated in a somewhat challenging passage

Revise text as needed to improve the exactness or content appropriateness of word choices within somewhat challenging texts

17

6 to 36

Draw reasonable inferences and logical conclusions from challenging texts

Analyze information presented quantitatively in such forms as graphs, tables, and charts and relate that information to information presented in somewhat challenging text

Determine how the selection of specific words shapes meaning and tone in a challenging passage

Use a variety of sentence structures to accomplish a rhetorical purpose such as persuading an audience

Retain or add information or ideas to a piece of text to support claims or points in challenging text

Math Test

Interpret a linear inequality in one variable with rational coefficients that represents a context. Select the equation of a line of best fit and interpret the slope and intercept of the line in the context of the situation (when a linear model is appropriate)

Interpret sample statistics understanding and using margin of error

Solve and interpret a quadratic function or equation that represents a context and requires multiple steps

Calculate and interpret frequency distributions using tables and other representational methods

21.0

6 to 36

Determine how a graph may be affected by a change to its equation

Determine the value of a constant or coefficient for an equation with no solution or infinitely many solutions

Using a specified model, make a prediction and compare the predicted values with the actual values in the data set

Within a context, compare the center of two separate data sets with different spreads

Determine whether two events are independent given their probabilities

Use a variety of sentence structures to accomplish a rhetorical purpose such as persuading an audience

Get more next steps online

studentscores.collegeboard.org



Free Practice

Practice the skills you'll need for high school and beyond – free online on khanacademy.org/sat



Core Course Work

Use your results to create a core course work plan in high school



Explore

Begin to explore careers that might interest you – link directly from your online score report

Your Question-Level Feedback

Reading

Question #	Your Answer	Difficulty	Subscore	Cross-Test Score
1	✓	■		
2	✓	■	COE	
3	✓	■	WIC	
4	X	■		
5	✓	■	WIC	
6	X	■		
7	✓	■	COE	
8	✓	■		
9	✓	■		HSS
10	X	■	WIC	HSS
11	✓	■	COE	HSS
12	✓	■	COE	HSS
13	✓	■		HSS
14	✓	■		HSS
15	✓	■		HSS
16	✓	■	WIC	HSS
17	✓	■		HSS
18	X	■		SCI
19	✓	■	WIC	SCI
20	✓	■		SCI
21	✓	■	WIC	SCI
22	✓	■	COE	SCI
23	✓	■		SCI
24	✓	■		SCI
25	✓	■		SCI
26	∅	■	COE	SCI
27	✓	■		HSS
28	✓	■		HSS
29	✓	■	COE	HSS
30	✓	■	WIC	HSS
31	✓	■		HSS
32	X	■	COE	HSS
33	✓	■		HSS
34	✓	■	WIC	HSS
35	✓	■		SCI
36	✓	■	COE	SCI
37	✓	■	WIC	SCI
38	✓	■		SCI
39	✓	■		SCI
40	✓	■	WIC	SCI
41	✓	■		SCI
42	✓	■	COE	SCI

Writing and Language

Question #	Your Answer	Difficulty	Subscore	Cross-Test Score
1	✓	■	SEC	
2	✓	■	EOI, COE	
3	✓	■	EOI, WIC	
4	✓	■	SEC	
5	✓	■	EOI, WIC	
6	X	■	SEC	
7	✓	■	EOI, COE	
8	✓	■	EOI	
9	✓	■	EOI	
10	X	■	SEC	
11	✓	■	SEC	
12	✓	■	EOI, COE	HSS
13	✓	■	EOI, COE	HSS
14	✓	■	SEC	
15	✓	■	EOI	HSS
16	✓	■	SEC	
17	✓	■	EOI, WIC	HSS
18	✓	■	EOI	HSS
19	✓	■	SEC	
20	✓	■	EOI, WIC	HSS
21	X	■	SEC	
22	✓	■	EOI, WIC	SCI
23	✓	■	SEC	
24	✓	■	EOI, WIC	SCI
25	✓	■	SEC	
26	∅	■	EOI	SCI
27	✓	■	EOI, COE	SCI
28	✓	■	EOI	SCI
29	✓	■	SEC	
30	✓	■	EOI, COE	SCI
31	✓	■	EOI, COE	
32	✓	■	EOI, WIC	
33	✓	■	SEC	
34	✓	■	EOI, COE	
35	X	■	SEC	
36	✓	■	SEC	
37	✓	■	EOI	
38	✓	■	EOI, WIC	
39	✓	■	SEC	
40	X	■	EOI	

Math Test – Calculator

Question #	Your Answer	Difficulty	Subscore	Cross-Test Score
1	✓	■	HOA	
2	✓	■	PSD	
3	✓	■	PSD	HSS
4	X	■	HOA	
5	✓	■	PSD	SCI
6	X	■	HOA	
7	✓	■	HOA	
8	✓	■	PSD	SCI
9	✓	■	PSD	SCI
10	X	■		
11	✓	■	HOA	
12	✓	■	PSD	
13	✓	■	PSD	SCI
14	✓	■	PSD	SCI
15	X	■	HOA	
16	✓	■	PSD	
17	✓	■	HOA	
18	✓	■	PSD	HSS
19	✓	■	PSD	
20	X	■	PSD	
21	✓	■	PSD	HSS
22	✓	■	HOA	
23	X	■	PSD	
24	✓	■	PSD	HSS
25	X	■	PSD	HSS

Math Test – No Calculator

Question #	Your Answer	Difficulty	Subscore	Cross-Test Score
1	✓	■	HOA	
2	✓	■	HOA	
3	X	■	HOA	
4	✓	■	HOA	
5	✓	■		HSS
6	X	■	HOA	
7	✓	■		
8	✓	■		
9	✓	■	HOA	
10	X	■		SCI
11	✓	■	HOA	
12	X	■		
13	✓	■	HOA	

Key:

- ✓ Correct
- X Incorrect
- ∅ Omitted
- U Unscorable
- Easy
- Medium
- Hard

Subscore:

- COE** Command of Evidence
- WIC** Words in Context
- EOI** Expression of Ideas
- SEC** Standard English Conventions
- HOA** Heart of Algebra
- PSD** Problem Solving and Data Analysis

Cross-Test Score:

- HSS** Analysis in History/Social Studies
- SCI** Analysis in Science

access code
A02670146P

Get your full report online
studentscores.collegeboard.org