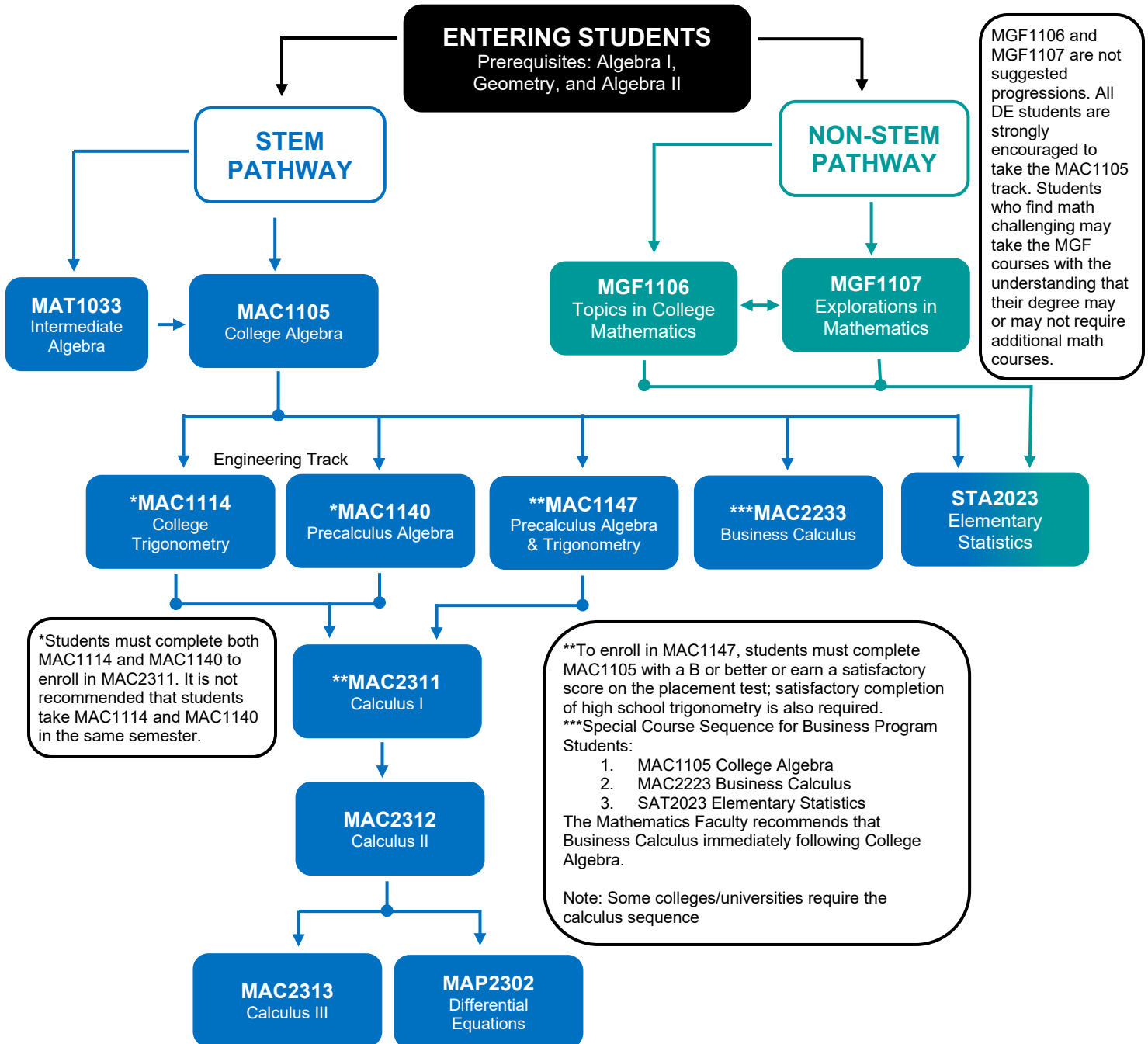


FSCJ DUAL ENROLLMENT MATHEMATICS PATHWAYS

ADAPTED FROM FSCJ'S MATHEMATICS COUNCIL AND DEPARTMENT RECOMMENDATIONS

All entering students who place in college-credit mathematics may take the courses on the top tier (see the Dual Enrollment Eligibility Requirements Form for required scores). Please note: Successful completion of two general education math courses is required for an A.A. degree.



Important Notes:

- See the FSCJ Catalog if you have additional questions.
- Credit-by Exam:
 - Students who wish to apply to a limited access (competitive entry) college, university, or program should contact potential future institutions with questions about transferability prior to contacting FSCJ for review of exam scores.
 - Students potentially eligible for the Florida Bright Futures Scholarship, should contact FLDOE Office of Student Financial Assistance at (888) 827-2004 or osfa@fldoe.org about credit-by-exam impact on eligibility.
 - Students using credit-by-exam should note that FSCJ denotes passing scores as a P on the student transcript which equates to a C.
- **For more information about defining STEM, you can read this article.**
- Department of Education. (2019). *Stem Programs*. Retrieved May 28, 2019, from Florida Department of Education: fldoe.org/academics/standards/subject-areas/math-science/stem/defining-stem.shtml